
Residential Projects

m a i s a m
architects | engineers


Amman, Abu Dhabi

2015

Introduction



maisam is committed to creating original places, spaces, and experiences which elevate the quality of human living through **knowledge, innovation, and design.**




Introduction



Building on years of Architecture & Engineering experience in the region and internationally, Meisa Batayneh and her team of associates established **maisam architects & engineers** with the vision to utilize knowledge, innovation and design in the pursuit of architectural excellence. maisam's expertise is focused on providing planning, architecture and design services to developers, corporations, governments and individuals.

At the core of the company lies The DesignLab™ staffed by highly motivated and dynamic architects whose ultimate purpose is to produce original products that create optimal value for each client. The DesignLab™ is recognized for its creative edge and innovative design methodology.

With offices in Abu Dhabi, UAE and Amman, Jordan, maisam operates in the Middle East and GCC regions, maisam's multi-disciplinary team comprises architects, engineers, urban planners, project managers, landscape designers, and branding experts.




Introduction



Over the years, maisam's team has been producing diverse landmark projects, ranging from sustainable master-planning for a new city development project in Pakistan that will eventually accommodate two million people to urban solutions that preserve the world heritage site of Petra. Other landmark projects include residential - commercial towers and Palaces in Abu Dhabi, several mixed use projects in the Abdali Urban Regeneration development and the expansion and renovation of one of Santa Fe's oldest residences.

maisam's Portfolio also comprises of diverse prestigious projects, such as: the New Terminal building at Queen Alia International Airport and the Living Wall Mixed Use project, both of which done in collaboration with the world renowned architects Foster and Partners and Phase I development of the Marsa Zayed project in Aqaba which is considered to be the largest real estate development project in Jordan, stretching across 3.2 million square meters.



Introduction

maisam's track record includes several projects which were regionally and internationally recognized, nominated and awarded through numerous and prestigious awards' programs.

The nominations included "Winner of Winners" of the Arch-Triumph competition for the "Museum of Architecture" (MOA), shortlisted for the World Architectural Festival (WAF) Awards in 2009 and 2012. "Maani Residence" was nominated for the prestigious Agha Khan Award in 2004. All of these achievements are aside from winning multiple Arabian Property Awards in 2010, 2011, 2012 and 2013.

In 2014 maisam was awarded the International LEAF Awards in the category of "Urban Design of the Year" for the project "A Gateway to Petra". In 2015, the project was awarded the prestigious International Architizer A+ Popular Choice Award in the category of Master planning, out of thousands of projects that were submitted.

Company Culture

maisam's culture is founded on a spirit of teamwork, partnership and sharing its achievements and successes, all driven by the innate belief in the quest for knowledge and the relentless pursuit of excellence. "Passion, integrity, discipline and respect" are the core values which maisam brings to projects, clients and strategic partners through its collaborations.

Company Structure

In order to respond to the increasingly competitive environment and the need for economic efficiency and organizational responsiveness, maisam has adopted a horizontal organizational structure in the form of a digital chain of intersecting units. Each unit is self-directed and operates on the basis of multi-disciplinary teams working together on “project-by-project” basis to achieve maisam’s strategic goals. The intersection between these units reflects the importance of team synergy and creativity throughout the project cycle. This unique style of project management contributes to maisam’s recognized brand as a firm that is able to deliver high-quality products which serve the intention of the project efficiently and effectively.

When required, maisam draws on a fine group of strategic alliances with international and regional firms and consultants whose expertise includes infrastructure design, leisure management, environment planning, sustainable development etc. . Selecting the right team of specialists to support and nurture each project from conception to implementation guarantees the much needed balance between the technical and the creative.

Services

Master Planning

maisam's involvement in some of the region's major master planning endeavors is a result of methodical expertise in evaluating and devising at both the macro and the micro levels. The strategic alliances that maisam draws on with international experts in every field of planning ensure a high quality product that provides for every aspect of the client's needs and vision. maisam's methodology calls for extensive input from experts in each phase of the project, from the charette stage through to implementation.

Planning

maisam's comprehensive planning services not only assure alignment with government legislation and regulations, but also encompass feasibility analysis, site selection studies, urban planning, suburban planning and development, and site planning. maisam's team of planners & engineers are backed by experts in the fields of economy, sociology, communication, marketing, and branding. maisam's extensive planning service responds to anthropological needs, available resources, municipal and metropolitan limitations, as well as economic viability and feasibility.



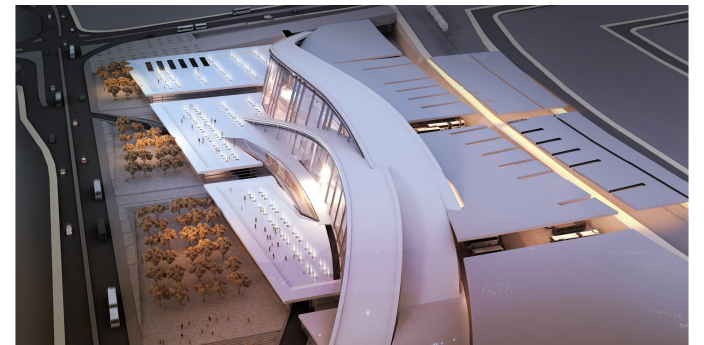
Urban design

maisam's urban design approach is sensitive to the human condition and the experience of the natural environment. This approach allows a critical appraisal of the human scale and human needs, based on a collective concern for three-dimensional space as well as for public areas between buildings. maisam's multi-disciplinary design team provides solutions for civic design, landscape design, and infrastructure engineering and architecture. The amenities in design are introduced in layers answering for function, microclimate, materials, services, maintenance and most importantly the users. Projects range in scale from urban nodes to university campuses and city centers.



Exterior & Interior Architecture

maisam is recognized in Jordan and the region for its creative edge that pushes design beyond norms and established perceptions. maisam's clients rang from individuals, corporate houses, government bodies, and royal families, many of which are long-standing relationships of trust and mutual respect. The client's direct involvement in the design process allows for a unique interaction with the designers in brainstorming sessions, resulting in at least three design alternatives that capture the vision and needs of each client. maisam's relentless attention to detail coupled with the aim to achieve the highest quality end-product ensures a creative process that benefits the client.



Services

Landscape architecture

maisam's methodology for landscape design is holistic in approach, whereby the landscape design becomes the recipient of input from numerous design tools. The controlling factors vary from landscape visualization to the site's environmental perception, inclusive of public land management processes and most importantly the sustainability of the landscapes thus created. On another level, the landscape design facilitates communication for a working relationship between people and their physical environment. In addition to the conventional tools available, maisam's landscape architects fuse the principals of other social and biological sciences with environmental engineering to deliver a high quality design product.



Engineering & Structural design

maisam's multi-disciplinary engineering team is responsible for the creation of highly functional designs utilizing state of the art technology for cost effective, energy efficient, and reliable engineering systems that provide utmost comfort and sustainability. maisam's engineering team consists of expert structural design engineers with vast experience in projects of complex and large scale programs. maisam's team is equipped with a wide range of expertise that includes the research and analysis of plans and technical proposals, the economical design building materials, special know-how in earthquake-resistant designs, and in developing technical solutions concerning structural and civil designs. The team's high skill level in the application of CAD programs and other computer software in providing engineering solutions ensures deliverables well within projected time schedules.



Construction Supervision

Construction supervision is integral to maisam's promise of quality. On-site supervisors ensure that the highest technical standards of quality and workmanship are observed, where high quality is achieved in alignment with the contract, specifications, and most importantly the original design concept. The supervisor forms a crucial link between the site and the designers providing answers to site queries and architectural details as well as solutions to inevitable new realities arising at site. Each construction site is managed and supervised by an experienced team of architects and engineers who also clarify and advise on matters relating to building construction regulations and contractual issues.



Green Building

Introducing Green

Maisam adopts an aggressive sustainability and green building agenda through the application of environmental, sustainable and green strategies in its projects, and through supporting the efforts of the Jordanian A/E sector in the field of green building, in addition to applying environment friendly strategies within the company itself.

Green Experience

Building on its team Green and LEED experience, maisam's design methodology entails the creation of sustainable and environmental strategies at the early stages of conceptual design. Utilizing both passive and active techniques, these strategies become in many cases the driver of a project's design concept. In its award winning project Crystalle Apartment Building, Maisam has employed various sustainable strategies that warranted the project Jordan's first LEED Gold pre-certification from the USGBC. The competition winner Atrium Building is another Maisam project registered for LEED and is expected to achieve silver level accreditation.



Crystalle Apartment Building, Abdali, Jordan

Awards & Shortlisting



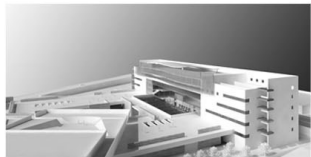
Petra Gate

- Winner of Architizer A+ Popular Choice Award, 2015
- Winner in the Category of Urban Design of the Year, LEAF Award, 2014



Maani Studio

- Shortlisted in the Category of Residential Building of the Year, LEAF Awards, 2014
- Five Stars, Best Single Residence, Jordan, Arabian Property Awards, 2012



College of Art & Design

- Five Stars, Best Public Service Architecture, Jordan, Arabian Property Awards, 2011
- Best Public Service Architecture Arabia, Arabian Property Awards, 2011



Maani Residence

- Five Stars, Best Architecture (single Unit) Arabian Property Awards, 2010



MOA- Museum of Architecture

- Shortlisted in the Winner of Winner stage of ArchTriumph Competition, Museum of Architecture, London, 2013



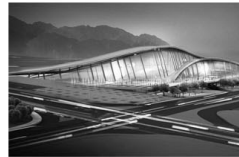
Carpet Bridge

- Shortlisted in the ArchTriumph Competition, Contemporary Bridge, Category, Paris, 2012



C19 Tower

- Five Stars, Best Architecture Multiple Residences, Abu Dhabi, Arabian Property Awards, 2011
- Best Architecture Multiple Residences, Arabian Property Awards, 2011



Aqaba Bus Terminal & Plaza

- Shortlisted in the Category of Future Competitions, World Architecture Festival Awards, 2009



Ahya'a Amman Boutique Hotel

- First Prize in the Leisure & Tourism Future Category at the prestigious Cityscape Global Awards for Emerging Markets, 2013



Jaffa Gate

- Five Stars, Best Office Architecture, Palestine, Arabian Property Awards, 2012



Zabaneh Residence

- Five Stars, Best Architecture Single Residence Jordan, Arabian Property Awards, 2011
- Best Architecture Single Residence Arabia, Arabian Property Awards, 2011



Crystalle Apartment Building

- Five Stars, Best Apartment Building, Arabian Property Awards, 2010
- Five Stars, Architecture Award, (Mixed Used Project), Arabian Property Awards, 2010



Mansion Gurgooan

- Five Stars, Best Multiple Residence Architecture, India, Arabian Property Awards, 2012



Atrium Office Building

- Highly Commended recognition in the category of Office Architecture, Jordan Arabian Property Awards, 2012



Ahya'a Amman Boutique Hotel

- Five Stars, Best New Small Hotel Construction and Design Jordan, Arabian Property Awards, 2011
- Best New Small Hotel Construction and Design Arabia, Arabian Property Awards, 2011



Crystalle Apartment Building

- Award for Best Future Commercial Project, Cityscape Dubai, 2006
- Award for Top Architecture, CNBC Arabian Property Awards, The Living Wall Project done in collaboration with Foster + Partners



Contemporary Paris Bridge

- Shortlisted in the Arch Triumph Competition, Contemporary Paris Bridge, Paris, 2012



Marsa Zayed

- Five Star, Best Mixed Used Architecture, Jordan, Arabian Property Awards, 2012



East West Tower

- Five Star, Best Mixed Used Architecture - Jordan, Arabian Property Awards, 2012



Petra Gate

- Shortlisted in the Cultural Category, World Architecture Festival Awards, 2011



Commercial Office of the Republic of China (Taiwan)

- Highly Commended Public Service Architecture Jordan, Arabian Property Awards, 2011



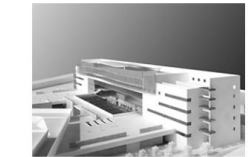
Union Banks

- Highly Commended Public Service Interior, Jordan, Arabian Property Awards, 2011



Atrium & Signature Commercial Building

- Architectural Competition Winner in Abdali Urban Regeneration, 2006



College of Art & Design

- Architectural Competition Winner, 2003

Core Team

Core Team



Meisa Batayneh Maani

Founder, Principal Architect

B.Sc. Architecture, 1981, University of Texas

Professional Associations:

- Jordan Engineers Association
- AE Business Council, Founding member
- Business & Professional Women's Association: President

Boards:

- MELA (Middle East Leadership Academy), Chairperson
- Isustain Awards Initiative, Founder
- AEBC Green Unit, Chair
- Cartier Award, Jury Member
- Holcim Award, Jury Member
- Jordan Green Building Council, JGBC Founding Member
- King Abdullah II Center for Excellence, Member
- Design Jordan, Chair
- Jordan National Gallery of Fine Arts, Member
- Climate Change Task Group (FIDIC), Member

Meisa Batayneh Maani is the founder and principal architect at maisam architects and engineers. She is experienced in multiple facets of design including architecture, planning, urban design and corporate and place branding. Over her long and distinguished career, Meisa has led multi-disciplinary teams on large-scale international and regional projects in USA, Pakistan, Cyprus, Saudi Arabia, Egypt, and UAE. She has created regional landmarks and master plans for projects such as the Rift Bay Project at the Dead Sea in Jordan, New Ravi City in Lahore, Pakistan and the Umm Yafenah Islands in Abu Dhabi, UAE. She has also acted as a consultant on projects for members of the Royal Family in Jordan, Saudi Arabia, and UAE.

In addition to Meisa's passion to use creativity, design, and innovation to enhance the built environment; she is actively involved in reform processes through numerous national and international commissions and boards. She is a member of the advisory committee for the Ministry of Environment; that's aims to establish Jordan as the regional hub for pioneering environmental solutions and planning. As a member of the Amman Commission; she is actively involved in the board's two-fold function as an advisory board to the Mayor of Amman and as a design review board. Meisa is also the chairperson of Design Jordan, president of Business & Professional Women of Amman (BPWA), founding member of the architecture and engineering business council and several other prestigious boards and committees.

Key Projects

Queen Alia International Airport New Terminal Building, Amman, Jordan
Amman Living Wall Mixed Use Project, Amman Jordan
Crystal City Development, Dead Sea, Jordan
Crystalle Mixed Use Building, Abdali, Jordan
The Atrium Commercial Building, Abdali, Jordan
Signature Commercial Building, Abdali, Jordan
Jordan Dubai Capital HQ & Office Building, Amman, Jordan
Union Bank Branches, Jordan & Palestine
Umm Qais Resort Village, Umm Qais, Jordan
Umm Yafenah Islands Master Plan, Abu Dhabi, UAE
Erbil City Center, Master Plan, Erbil, Iraq
Ravi City Development, Lahore, Pakistan
Rift Bay Master Plan, Dead Sea, Jordan
Martyr's Memorial Development, Amman, Jordan
VIP Village, Dead Sea, Jordan
King Hussein Convention Center Landscape, Dead Sea, Jordan
Dead Sea Conference Village, Jordan
Al Huda Plaza Residential Tower, Jeddah, Saudi Arabia
College of Art & Design, Amman, Jordan
Silver Tower, Amman, Jordan
Jordan International Insurance Company Headquarters, Amman, Jordan
Maani Showrooms, Amman, Cairo, Dubai.
Ministry of Foreign Affairs & Ministry of Planning Complex, Amman, Jordan
Maani Building Rehabilitation, Amman, Jordan
Universal Equipment corporate buildings, Amman, Jordan
Royal Palaces, Jordan
Futures Schools, Cairo, Egypt
Ministry of Information and Communications Technology, Amman, Jordan
Public Security Department Inter-City stations, Jordan
Villa La Luna, Santa Fe, USA
Villa Maani, Oaks Hill, Amman Jordan
Arab Bank Headquarters, Amman, Jordan
The Commercial Office & Residence of the Republic of China (Taiwan), Amman, Jordan



Hazem Nimri

Group CEO, Senior Partner

LEED AP

B.Sc. Architecture, 1996, University of Jordan

Professional Associations:

- Jordan Engineers Association
- AE Business Council

Boards & Committees:

- Public Sector Communication, AE Business Council
- Engineering Offices Qualification System Upgrade, Ministry of Public Works and Housing
- Green Building Guide, National Building Council

Hazem Nimri is the Group CEO and senior partner at maisam architects & engineers. With his extensive expertise in architecture and engineering, Hazem is an exceptional leader possessing the capacity to carry a project from initiation to final production, all while dedicating time an effort to strategic management, business development and expansion planning. Hazem's ability to cleverly balance between client needs, project deliverables and design quality has earned him a reputation of versatility and objective fairness among his clients and peers. His progression in his career exposed him to numerous disciplines in the industry as well as in strategic management, expansion planning and management operations, while this has led him to a flourishing executive career, nevertheless, Hazem maintains his creative edge and enjoys his involvement in all design stages and disciplines.

As an experienced Architect and Master Planner, Hazem shaped unprecedented solutions for a number of marquee Master Planning projects such as: Umm Yafenh Islands in Abu Dhabi, UAE, the Ravi City Master Plan in Lahore, Pakistan and the Rift Bay Master Plan at the Dead Sea, Jordan, in addition to many other Urban Design and Master Planning driven projects.

Key Projects

Queen Alia International Airport New Terminal Building, Amman, Jordan
Amman Living Wall Mixed Use Project, Amman Jordan
Crystal City Development, Dead Sea, Jordan
Crystalle Mixed Use Building, Abdali, Jordan
The Atrium Commercial Building, Abdali, Jordan
Signature Commercial Building, Abdali, Jordan
Jordan Dubai Capital HQ & Office Building, Amman, Jordan
Union Bank Branches, Jordan & Palestine
Umm Qais Resort Village, Umm Qais, Jordan
Umm Yafenh Islands Master Plan, Abu Dhabi, UAE
Erbil City Center, Master Plan, Erbil, Iraq
Ravi City Development, Lahore, Pakistan
Rift Bay Master Plan, Dead Sea, Jordan
Martyr's Memorial Development, Amman, Jordan
VIP Village, Dead Sea, Jordan
King Hussein Convention Center Landscape, Dead Sea, Jordan
Dead Sea Conference Village, Jordan
Al Huda Plaza Residential Tower, Jeddah, Saudi Arabia
College of Art & Design, Amman, Jordan
Silver Tower, Amman, Jordan
Jordan International Insurance Company Headquarters, Amman, Jordan
Maani Showrooms, Amman, Cairo, Dubai.
Ministry of Foreign Affairs & Ministry of Planning Complex, Amman, Jordan
Maani Building Rehabilitation, Amman, Jordan
Universal Equipment corporate buildings, Amman, Jordan
Royal Palaces, Jordan
Futures Schools, Cairo, Egypt
Ministry of Information and Communications Technology, Amman, Jordan
Public Security Department Inter-City stations, Jordan
Villa La Luna, Santa Fe, USA
Villa Maani, Oaks Hill, Amman Jordan
Arab Bank Headquarters, Amman, Jordan
The Commercial Office & Residence of the Republic of China (Taiwan), Amman, Jordan

Core Team



Rita Rawashdeh

Creative Director, Senior Partner

B.Sc. Architecture, 1999, Jordan University of Science & Technology

Professional Associations:

- Jordan Engineers Association
- Business & Professional Women
- MELA (Middle East Leadership Academy)

Rita Rawashdeh is maisam's creative director, heading maisam's **designlab™**, she leads a team of architects to achieve exceptional design solutions. Rita's key strength lies in her unique creative flair at achieving unique concepts, quality spaces, contemporary buildings, all forming outstanding architectural designs. Her appreciation of both the outdoor and the indoor coupled with a thorough attention to detail and an innate passion for aesthetics ensures a final product of unparalleled standards.

Rita's unique abilities allow her to work closely with her design team, motivating and challenging them to always bring out the best. Her responsibilities also include following up on the development and construction of projects to insure maximum alignment with the original design concept. She also has a natural artistic flair; she uses a range of techniques to express exceptional Arabian modern architecture. Rita's extraordinary design capabilities have been illustrated in outstanding projects of different types and scales in Jordan, Saudi Arabia, Egypt, UAE, and the USA. Her ability to ensure state of the art visual elements forms the essence of maisam's unique place branding and architecture design expertise.

Key Projects

Queen Alia International Airport New Terminal Building, Amman, Jordan
Amman Living Wall Mixed Use Project, Amman Jordan
Crystal City Development, Dead Sea, Jordan
Crystalle Mixed Use Building, Abdali, Jordan
The Atrium Commercial Building, Abdali, Jordan
Signature Commercial Building, Abdali, Jordan
Jordan Dubai Capital HQ & Office Building, Amman, Jordan
Union Bank Branches, Jordan & Palestine
Umm Qais Resort Village, Umm Qais, Jordan
Umm Yafenah Islands Master Plan, Abu Dhabi, UAE
Erbil City Center, Master Plan, Erbil, Iraq
Ravi City Development, Lahore, Pakistan
Rift Bay Master Plan, Dead Sea, Jordan
Martyr's Memorial Development, Amman, Jordan
VIP Village, Dead Sea, Jordan
King Hussein Convention Center Landscape, Dead Sea, Jordan
Dead Sea Conference Village, Jordan
Al Huda Plaza Residential Tower, Jeddah, Saudi Arabia
College of Art & Design, Amman, Jordan
Silver Tower, Amman, Jordan
Jordan International Insurance Company Headquarters, Amman, Jordan
Maani Showrooms, Amman, Cairo, Dubai.
Ministry of Foreign Affairs & Ministry of Planning Complex, Amman, Jordan
Maani Building Rehabilitation, Amman, Jordan
Universal Equipment corporate buildings, Amman, Jordan
Royal Palaces, Jordan
Futures Schools, Cairo, Egypt
Ministry of Information and Communications Technology, Amman, Jordan
Public Security Department Inter-City stations, Jordan
Villa La Luna, Santa Fe, USA
Villa Maani, Oaks Hill, Amman Jordan
Arab Bank Headquarters, Amman, Jordan
The Commercial Office & Residence of the Republic of China (Taiwan), Amman, Jordan



Nuha Handal

Lead Project Architect
Technical Director

B.Sc. Architecture, 1986, Jordan University of Jordan

Professional Associations:

- Jordan Engineers Association

As a Technical Director at **maisam architects & engineers**, Nuha is responsible for developing projects into their final format. her role includes the sustainability of the designer's initial concept throughout the project at the same time incorporating requirements of the structural and electro-mechanical departments. Nuha's keen ability in developing the design to suit the original requirements of the client and the requirements of the other engineering disciplines while always ensuring the designer's vision enabling to provide the design in its complete format. Her high level of skills in CAD, and other computer skills adds to her strength in utilizing the same in the analysis of projects at several levels.

Nuha brings with her extensive experience with distinguished Jordanian and Emirate architectural firms. Her key strength lies in leading and supervising the project team, coordinating with various engineering design disciplines involved in the project, conduct a codes analysis.

Key Projects

Marsa Zayed, Aqaba, Jordan
C19 Residential Tower
RAKIA Accommodations in Ras Al Khaima/ UAE
Cinmar Office building in Dubai/UAE
Al Darmaki villas in Abu Dhabi/UAE
Baccalaureate School Kindergarten in Al-Fuheis/Jordan
Al-Jeeza Residential City (Ahl Al-Azm)
Dubai Golf City, Residential villages Palace onplot 9 – Dubai Land
Centre of Irbid Urban Regeneration:
Renovation of Housing Bank Branches
Shams Al Riyadh Residential project in KSA
Marline Tooma Al-Sunna house at Tareq/Amman: Eng. Saeed Banna Villa at Dabouk\Amman
Dr.Faisal Gabra Villa at Riad\Saudi Arabia
Mrs. Awatef Gabra Villa at Riad\Saudi Arabia
Private apartment building for Mrs.Mariam Lozi at Jubeiha\Amman:
Housing project for Salah and partners Housing Co. Housing project for Ganem Haddad and partners housing co. at Aqaba
Khalid Esbeita Villa at Abdoun \Amman
Housing project for Imad Sweis and partners
Housing project for Elias Sweis and partners housing co. at AqabaMr.Jamil
Haddad semi detached villas at Al-Saroo\Al-Salt
Private apartment building for Mrs.Zeinab Mohamad Nour at Dabouk\Amman
Housing project for Ziad Khalil Salem housing co. at Aqaba
Proposal concept design for a Housing Complex at Abu Nseir\Safoot in Amman
Commercial building for Mr. Aziz Kopti and Partners at Jabal Amman\Amman
Commercial building for Mr. Nabil Abed Al-Rahim at Jbeiha \Amman
Proposal for renovation of Glucose Manufacturing Factory at Sahab\ Industrial City
Design and prepare working drawings of Eshidya Mines Project of Jordan Phospate Mines Company Design and prepare working drawings for Furnishing of The Central Laboratory of The Water Authority of Jordan.
Design and prepare working drawings of Aqaba International Airport Main Gate
Lighting of AJLUN CASTLE.

Core Team



Yelena Rihani

Technical Director

M.Sc. degree in Architecture Engineering, University of Baku - Soviet Union.

Professional Associations:

- Jordan Engineers Association

Yelena Rihani is a technical Director that leads a group of architects during the production phase of the detailed design and construction documents. Yelena brings with her extensive experience in architectural design and strong capabilities in leading and supervising the project team, coordinating with various engineering design disciplines involved in the project.

Key Projects

Marsa Zayed, Aqaba, Jordan
C19 Residential Tower
RAKIA Accommodations in Ras Al Khaima/ UAE
Cinmar Office building in Dubai/UAE
Al Darmaki villas in Abu Dhabi/UAE
Baccalaureate School Kindergarten in Al-Fuheis/Jordan
Al-Jeeza Residential City (Ahl Al-Azm)
Dubai Golf City, Residential villages Palace onplot 9 – Dubai Land
Centre of Irbid Urban Regeneration:
Renovation of Housing Bank Branches
Shams Al Riyadh Residential project in KSA
Marline Tooma Al-Sunna house at Tareq/Amman: Eng. Saeed Banna Villa at Dabouk\Amman
Dr.Faisal Gabra Villa at Riad\Saudi Arabia
Mrs. Awatef Gabra Villa at Riad\Saudi Arabia
Private apartment building for Mrs.Mariam Lozi at Jubeiha\Amman:
Housing project for Salah and partners Housing Co. Housing project for Ganem Haddad and partners housing co. at Aqaba
Khalid Esbeita Villa at Abdoun \Amman
Housing project for Imad Sweis and partners
Housing project for Elias Sweis and partners housing co. at AqabaMr.Jamil
Haddad semi detached villas at Al-Saroo\Al-Salt
Private apartment building for Mrs.Zeinab Mohamad Nour at Dabouk\Amman
Housing project for Ziad Khalil Salem housing co. at Aqaba
Proposal concept design for a Housing Complex at Abu Nseir\Safoot in Amman
Commercial building for Mr. Aziz Kopti and Partners at Jabal Amman\Amman
Commercial building for Mr. Nabil Abed Al-Rahim at Jbeiha \Amman
Proposal for renovation of Glucose Manufacturing Factory at Sahab\ Industrial City
Design and prepare working drawings of Eshidya Mines Project of Jordan Phospate Mines Company Design and prepare working drawings for Furnishing of The Central Laboratory of The Water Authority of Jordan.
Design and prepare working drawings of Aqaba International Airport Main Gate
Lighting of AJLUN CASTLE.



Dawood Jabaji

Principle Structural Engineer

Ph.D. Structural Engineering, 1974 University of Dundee, UK

BSc. Civil Engineering, 1970, Al Hikma University, Iraq

Professional Associations:

- Jordan Engineers Association
- Associations American Concrete Institute
- The Concrete Institute, U.K.
- Pre-stressed Concrete Institute, U.S.A.
- The Concrete Society, Jordan

Extensive experience in Structural Design as the past head of the Structural Division at Jafar Tukan & Partners.

Major projects include multi-story commercial buildings, five star hotels, hospitals, banks and industrial buildings. Projects in Jordan, United Arab Emirates, Saudi Arabia and Palestine. Author of "Pyramid" – Structural Analysis and Design Software

Building Standards, Specifications and Codes:

Served as director of the drafting team for the General Building Specifications of Jordan and the National Building Codes of Jordan.

Joint author - book on Buildings Codes and Specifications for the ArabWorld. Published by MacMillan, 1983

Building Construction Materials and Technology:

Extensive experience in the fields of building materials, quality control, construction procedures, and construction detailing. Good experience in Construction Contracts and management of the Consultant/Contractor relationship.

Housing:

Served as the head of the team at the Royal Scientific Society which developed a housing construction system

for low income groups. Participated in many local and regional seminars on housing and strategies for sustainable development – often as speaker, once as keynote speaker.

Management:

Served in a dual management/technical role during the period of 1978- 2003. Attended a number of seminars on management and effective management techniques. Served as director of the Building Research Center at the Royal Scientific Society. Served as Administrative Director at Jafar Tukan & Partners in addition to the technical role of chief structural designer.

Real Estate Development:

Assisted in the preparation of feasibility studies for a number of five star hotels and other commercial developments in Amman. Served as manager for the development of a number of master plans for mixed use and housing projects in Aqaba, Amman and Saudi Arabia

Core Team



Ahmad Tayeh

Lead Project Architect,
Associate Partner

B.Sc. Architecture, 2005
Jordan University of science & Technology

Professional Associations:

- Jordan Engineers Association

Ahmad Tayeh a Lead Project Architect and Associate partner in maisam architects & engineers.

As a Lead Project Architect, Ahmad's key strength lies in leading and supervising the project's design team to realize a solid threshold towards the project concepts proposal, developing the approved alternative, and arriving with the project team to the schematic design that meets the client requirements and expectations. During the project's early stage; Ahmad leads and supervises a group of architects in producing the concept design alternatives while accommodating the functional and spatial requirements of the project.

In addition Ahmad follows up on the required supervision office support to ensure compliance with the design.

Ahmad is qualified as a Lead Project Architect with proven capability to meet the client design satisfaction thus was recently appointed as associate partner in maisam.

Key Projects

Crystal City Development, Dead Sea, Jordan
Crystalle Mixed Use Building, Abdali, Jordan
The Atrium Commercial Building, Abdali, Jordan
Signature Commercial Building, Abdali, Jordan
Union Bank Branches, Jordan & Palestine
Umm Qais Resort Village, Umm Qais, Jordan
Rift Bay Master Plan, Dead Sea, Jordan
Dead Sea resort, Dead Sea, Jordan
VIP Village, Dead Sea, Jordan
King Hussein Convention Center Landscape, Dead Sea, Jordan
Dead Sea Conference Village, Jordan
Huda II Hotel & Residential Complex, Jeddah, Saudi Arabia
Al Huda Plaza Residential Tower, Jeddah, KSA
College of Art & Design, Amman, Jordan
Silver Tower, Amman, Jordan
Union Land Development, Amman, Jordan
Zahrn Gate, Amman, Jordan
Martyr's Memorial Development, Amman, Jordan
Jordan International Insurance Company Headquarters, Amman, Jordan
Maani Showrooms, Amman, Dubai.
Maani Building Rehabilitation, Amman, Jordan
Royal Palaces, Jordan
Future Schools, Cairo, Egypt
Ministry of Information and Communications Technology, Amman, Jordan
Shaban – Zein Duplex, Amman, Jordan
Ramzi Zein Residence, Amman, Jordan
Akabi Residence, Amman, Jordan
Zabaneh Residence, Amman, Jordan
Salfiti Residence, Amman, Jordan
Deera Plaza, Airport Corridor, Jordan
Zahrn Office Building, Amman, Jordan
Sienna Hills, Ktefeh, Jordan



Dunia Abdallah

Lead Project Architect,
Associate Partner

B.Sc. Architecture, 2003
Applied Science University

Professional Associations:

- Jordan Engineers Association

Dunia Abdallah as a Lead Project Architect and Associate partner in maisam architects & engineers, her key strength lies in leading and supervising the project's design works to realize a solid threshold towards the project concepts proposal, developing the approved alternative, and arriving with the project team to the schematic design that meets the client requirements and expectations during the project's early stage. Dunia has participated in several key projects in both large and small scale that are unique in concept and consistently pushes the boundaries of architecture and urban design to new levels. She also invests in new generations of architectural talents and creates productive team work environment that elevate design outcome.

Dunia's qualifications as a Lead Project Architect have proved capability to raise design standards and thus was appointed as associate partner in maisam.

Key Projects

Universal Equipment corporate Building, Amman, Jordan
Jordinvest Head Quarters, Amman, Jordan
Sienna Hills, Ktefeh , Jordan
Union Land Development, Wadi Saqra , Amman, Jordan
The Commercial Office & Residence of the Republic of China (Taiwan), Amman, Jordan
Crystalle mixed use Building, Abdali, Jordan
Maani Building Rehabilitation, Amman, Jordan
The Atrium Commercial Building , Abdali , Jordan
Signature Commercial Building, Abdali , Jordan
Al Huda Plaza Residential Tower, Jeddah, KSA
College of Art & Design, Amman, Jordan
Rift Bay Master Plan, Dead Sea, Jordan
Martyr's Memorial Development, Amman, Jordan
Akabi Residence, Amman, Jordan
Public Security Department Inter-City stations, Jordan
Royal Palaces, Jordan
Ministry of Information and Communications Technology, Amman, Jordan
King Hussein Convention Center Landscape, Dead Sea, Jordan
Ramzi Al Zein Residence, Amman, Jordan
Shaban-Zein Apartments, Amman, Jordan
Nadia Dajani Residence, Amman, Jordan
Nadia Saeed Residence renovation, Amman, Jordan
Majlis at Mushrif Palace Competition, Abu Dhabi, UAE

Core Team



Sanad Gharaybeh

Lead Project Architect,
Associate Partner

B.Sc. Architecture, 2001, Jordan
University of Science & Technology

Professional Associations:

- Jordan Engineers Association

Sanad Gharaybeh is a Lead Project Architect with International experience and proven capability to meet the client design requirements thus was recently appointed as associate partner in maisam architects and engineers. Sanad has participated in several key projects in both large and small scale that are unique in concept and consistently pushes the boundaries of architecture and urban design to new levels.

Key Projects

The Red Sea Astrarium, Aqaba, Jordan
Walsh Western Logistics Warehousing (IRE)
Anglo Irish Bank, Dublin (IRE)
Al Kazim twin towers 2B+G+7P+53. (UAE)
Shaza tower 2B+G+39 (UAE)
Office building at Emirates Hill 3B+G+36 floors (UAE)
AJIB Arab Jordanian investment banking 6B+G+14 floors (JOR)
Pinnacle residential tower 70 floors-marina Dubai (UAE)
Ayla islands, Aqaba (JOR)
Kinsale road mixed use development Cork (IRE)
Mixed use development at Ballymun, Dublin (IRE)
Mixed use development at Glasnevin hill, Dublin 9 (IRE)
2B+G+M+30 floors Commercial, Residential tower at Dubai Marina
M3 residential tower 2B+G+ 37, at Jumira lake residence. (UAE)
3B + G 39 Residential tower at Dubai Internet City (UAE)
Private villa at the palm island, Dubai (UAE)
Recreation centre at the world island, Dubai (UAE)
n2 tower g+45, Dubai
Castlenock housing estate (IRE)
Housing estate in Bray, Dublin (IRE)
Dubai sports city. (UAE)
Varkey school at Dubai, capacity of 4000 students.(UAE)
Varkey school at mazher, Dubai, (UAE)
Mosque in Dubai, (UAE)
Clooney master plan. (IRE)
JTI Tobacco company. (JOR)
Zarooni building residential + retail (UAE)
Commercial B+G+7 floors at Qusais Ind. 2 (UAE)
Commercial, residential tower, Marsa Dubai, 2B+G+16 floors (UAE)
JW Marriott , Aqaba city, Jordan
Queen Alia international airport, Concessionaire Design
Dubai international airport terminal2. (UAE)
DHCC Administration Offices, Dubai (UAE)
Highfield mental health hospital, Dublin. (IRE) Abu Dhabi, UAE



Karam Awad

Lead Project Architect,
Associate Partner

B.Sc. Architecture, 2005 Jordan University of Science & Technology

Professional Associations:

- Jordan Engineers Association

Karam has joined maisam as a junior architect upon his graduation; his skills and dedication have allowed him to move quickly in the organization to earn the position of a project architect. His strength lies in his attention to detail, accuracy and his exceptional abilities in 2D & 3D design applications that enable him to develop coordinate and produce complex architectural project

Key Projects

C19 Residential Towers
Sector 7 Mixed Use Project, Abdali, Amman, Jordan
Jordan Dubai Capital, Amman, Jordan
Martyr's Memorial Development, Amman, Jordan
Military Museum, Amman, Jordan
Crystal City, Dead Sea, Jordan
Siena Hills, Amman, Jordan
Union Bank, Ramallah, Palestine
Deera Mixed Use Development, Amman Jordan
Aqaba Bus Terminal Competition, Aqaba, Jordan
Clinic Building, Amman, Jordan
Murjan Islands, Jeddah, S.A.
Union Parks, Amman, Jordan
Universal Equipment Iveco Center, Amman Jordan
Maani Show Room , Jeddah, S.A.
Mina Villa, Amman, Jordan
Waha Land Master Plan Development, Abu Dhabi, UAE
Aqua park Competition, Abu Dhabi, UAE
Signature Commercial Building, Abdali , Jordan
Union Bank Branches, Jordan & Palestine
Umm Qais Resort Village, Umm Qais , Jordan
Aqua park Competition, Abu Dhabi, UAE
Rift Bay Master Plan, Dead Sea, Jordan
Dead Sea resort, Dead Sea, Jordan
VIP Village, Dead Sea, Jordan
King Hussein Convention Center Landscape, Dead Sea, Jordan
Dead Sea Conference Village, Jordan
Huda II Hotel & Residential Complex, Jeddah, Saudi Arabia
Al Huda Plaza Residential Tower, Jeddah, KSA
College of Art & Design, Amman, Jordan

Core Team



Halah Mansour

Group Business Development Director
Area Manager, Associate Partner

BM.Sc. Project Management, 2007
B.Sc. Civil Engineering, 2004

Professional Associations:

- Jordan Engineers Association

Halah who joined maisam in 2006 as a Junior Project Coordinator has displayed remarkable leadership potentials and a strong determination and devotion for knowledge and excellence which enabled her to make a leap in her career path at rapid paces by becoming an Associate Partner in 2008, the Head of the Business Development Unit in 2009, the Group Business Development Director in 2013, and the Abu Dhabi Area Manager in 2014

By joining the Associate Partners team at maisam, Halah enjoys the right to attend the shareholders meetings, elect a Board member, and the right to receive shares of the company's profits. As The Group Business Development Unit Director, Halah is managing the out reach arm of the business and is responsible for the development and implementation of maisam's Master Business Development Plan, leading the growth of the company's sales by sourcing and securing new leads, opportunities and contracts. Halah leads a team of Business Development Executives to maximize sales opportunities, proactively identify new markets and create new opportunities to achieve Business Plan targets. Halah Provides strong coaching and mentoring for the business development officers and is focal in conveying the maisam's culture, values and spirit to her team.

Key Projects

Queen Alia International Airport New Terminal Building, Amman, Jordan
Amman Living Wall Mixed Use Project, Amman Jordan
Crystal City Development, Dead Sea, Jordan
Crystalle Mixed Use Building, Abdali, Jordan
Jordan Dubai Capital HQ & Office Building, Amman, Jordan
Union Bank Branches, Jordan & Palestine
Umm Qais Resort Village, Umm Qais, Jordan
Martyr's Memorial Development, Amman, Jordan
Silver Tower, Amman, Jordan
Universal Equipment corporate buildings, Amman, Jordan
The Commercial Office & Residence of the Republic of China (Taiwan), Amman, Jordan
Zabaneh Residence, Amman, Jordan
Salfiti Residence, Amman, Jordan
Deera Plaza , Airport Corridor , Jordan
Zahran Office Building , Amman , Jordan
Sienna Hills , Ktefeh , Jordan
Jordinvest Head Quarters
Union Land Development, Wadi Saqra
Allayyan Residence, Amman, Jordan
Alma Residence, Amman, Jordan
Empire Office Building, Amman, Jordan
Dead Sea Resort, Dead Sea, Jordan
Mirage Residence, Umm Rummaneh, Jordan



Nazem Rabadi

Group Director of Operations

Bachelor of Arts, Business Administration- Concentration, Finance
California State University of Fullerton-
Fullerton, CA

Professional Associations:

- Member of the Middle East Leadership Academy (MELA)

Twelve years of successful track record in implementing brand and corporate strategy in B2B (7 year experience) and Retail (12 year experience) operations by applying research and feasibility methodology, financial analysis, price positioning, profitability analysis, market penetration planning and customer retention strategies, while leading cross functional managers and teams. Demonstrated knowledge in creative promotional methodologies, product management and marketing that is responsive to cultural considerations.

Specialties + Skills

- Proven partners, channel development and global operation experience.
- Coaching and mentoring
- Excellent negotiation skills, track record in turning opposition into advocacy.
- B2B and retail experience.
- Pricing, price indexing, product mix planning and volume forecasting.
- Data cleansing, organization, interpretation, charting and analysis.
- Experience in ERP implementation, data migration and IT infrastructure.
- Strong practical knowledge in Web Research, Spread Sheet, Word Processing, Presentation, Project Management and Data Base (Microsoft Excel, PowerPoint, Word, Project and Access)- Experience in Graphic Design and Computer Aided Drafting: Adobe Photoshop, AutoCAD/Mechanical Desktop, and Unigraphics.
- Languages: Fluent in English and Arabic. Practical knowledge in French

Projects & References

Project List

Queen Alia International Airport New Terminal Building, Amman, Jordan
Amman Living Wall Mixed Use Project, Amman Jordan
Crystal City Development, Dead Sea, Jordan
Crystalle Mixed Use Building, Abdali, Jordan
The Atrium Commercial Building, Abdali, Jordan
Signature Commercial Building, Abdali, Jordan
Jordan Dubai Capital HQ & Office Building, Amman, Jordan
Union Bank Branches, Jordan & Palestine
Umm Qais Resort Village, Umm Qais, Jordan
Umm Yafenh Islands Master Plan, Abu Dhabi, UAE
Erbil City Center, Master Plan, Erbil, Iraq
New City Development, Punjab, Pakistan
Rift Bay Master Plan, Dead Sea, Jordan
Aqaba Special Economic Zone Master Plan, Jordan
Industrial Park, Zarqa, Jordan
Media City, U A E
Emirates Hills Development Master Plan, Dubai, U A E
Dead Sea resort, Dead Sea, Jordan
VIP Village, Dead Sea, Jordan
King Hussein Convention Center Landscape, Dead Sea, Jordan
Dead Sea Conference Village, Jordan
Amman Conference Centre, Amman, Jordan
Huda II Hotel & Residential Complex, Jeddah, Saudi Arabia
Al Huda Plaza Residential Tower, Jeddah, Saudi Arabia
College of Art & Design, Amman, Jordan
Silver Tower, Amman, Jordan
Medical Center, Amman, Jordan
Union Land Development, Amman, Jordan
Mirage Residence, Umm-Rummaneh, Jordan
Zahrn Gate, Amman, Jordan

Martyr's Memorial Development, Amman, Jordan
Jordinvest Headquarters, Amman, Jordan
Jordan International Insurance Company Headquarters, Amman, Jordan
Arab Land Bank, Amman, Jordan
Shaban Corporate Building, Amman, Jordan
Maani Showrooms, Amman, Cairo, Dubai.
Ministry of Foreign Affairs & Ministry of Planning Complex, Amman, Jordan
Adnoc Corporate Identity, Abu Dhabi, U A E
Maani Building Rehabilitation, Amman, Jordan
Universal Equipment corporate buildings, Amman, Jordan
Royal Palaces, Jordan
An-Najah National University New Campus, Nablus, Palestine
Futures Schools, Cairo, Egypt
Ministry of Information and Communications Technology, Amman, Jordan
Public Security Department Inter-City stations, Jordan
Villa La Luna, Santa Fe, USA
Daystar Residential development, Amman, Jordan
Prince Sattam Palace, Saudi Arabia
Prince Sattam Condominium, Cairo, Egypt
Prince Turki Palace, Saudi Arabia
Villa Maani, Oaks Hill, Amman Jordan
Shaban Masri Apartments, Amman, Jordan
Shaban – Zein Duplex, Amman, Jordan
Ramzi Zein Residence, Amman, Jordan
Akabi Residence, Amman, Jordan
Zabaneh Residence, Amman, Jordan
Allayyan Residence, Amman, Jordan
Salfiti Residence, Amman, Jordan
Empire Office Building, Amman, Jordan

Clients:

HRH Prince Ali Bin Nayef
HRH Princess Wijdan Ali, Dean of the College of Arts & Design.
H.E. Omar Maani, Mayor of Amman
H.E. Mr. Akram Abu Hamdan, Development & Investment Products fund.
H.E. Mr. Samir Rifa'i, Jordan Dubai Capital.
Eng. Nayef Al Bakheet, Director, Royal Engineering Department, Royal Court.
H.E. Dr. Bassem Awad-Allah, chairman, King Abdullah II Fund.
Mr. Issam Salfiti, Chairman, Union Bank
H.E. Nadia Al Saeed, GM, Union Bank
Mr. Nathmi Auch, President, Le Royal Hotel.
Mr. Tarik Awad, vice chairman, King Abdullah II Fund.
H.E. Dr. Fawaz Al Zubi, CEO, Accelerator Technology Holdings.
Mr. Nayef Zerikat, Director, King Hussein Convention centre.
Mr. Obiedah Kurdi, chairman, Kurdi Group.
Mr. Mohammed Batayneh, CEO, Bader Development.
Mr. Rami Swais, Fayeze Swais General Trade.
Mr. Haytham Dahleh, Tameer.
Mr. Ramzi Salfiti, Union Land Development.
Mr. Mo'ayad Dabbas, Tamleek for Real Estate Development.
Mr. Steve Mccart, Emaar.
Mr. Omar Shoqom, Petra Aluminum.
Mr. Ahmad Tantash, Jordinvest.
H.E. Sami Gammouh, Chairman, Jordan International Insurance Company.
Mr. Ziad Al Masri, Vice Chairman, Jerusalem Insurance Company.
Dr. Ali Al Qayem, Chairman, Al Tajamua International for Real Estate development.
Dr. Hassan Al Qala, Chairman, Futures School.
Dr. Amin Badr Eldin, Bader Investment.
Mr. Nameer Akabi, ALMCO Construction Company, Baghdad, Iraq.
Mr. Omar Shaban, CEO, General Contracting Company.

References

Mr. Ramzi Zein, CEO, STS Company.
Mr. Anas Rimawi, CEO, Estarta.
Mr. Amjad Mehreqani, Day Star Development.
Mr. Shwan Al-Mulla, President ICCB, Iraq.

Joint Venture and Collaborations:

Foster and Partners, Mr. Huw Thomas, Partner
ARUP, London, UK, Mr. Gregoir Chikaher, Director
WATG, London, UK, Mr. John Elliot
ARUP, London, UK, Mr. Ian Carradice, Associate Director
LOVEJOY, London, Mr. David Blackwood Murray, Director
GHD, Dubai, Mr. Paul Morris, Manager
GHD, Australia, Mr. Ken Wallace
Arabtech Jardaneh, Jordan, Eng. Bisher Jardaneh, Managing Director
Word Search, London, UK, Mr. Peter Murray, Director
Al Imam Enterprise, Lahore, Pakistan, Mr. Ahmed Mukhtar, Director
D P Architects, Singapore, Ms. Chan Hui Min
Martha Schwar, USA, Martha Schwartz, Inc.
Prof. Jan Ghel, Denmark, Partner, Gehl architects.
Ramboll Nyvig Transport and Urban Planning Consulting Engineers and Architects.

Academia:

Prof. Julian Bienhart, MIT, Boston, USA.
Dr. Babar Mumtaz, Director (DPU), University College London.
Dr. Rami Daher, Head of Arch. Dept., Jordan University of Science & Tech., Jordan.
Dr. Majdi Tawfiq, Head of Arch. Dep., Jordan University, Jordan.

1. Planning

2. Transport

3. Corporate &
Commercial

4. Hospitality

5. Educational

6. Governmental

7. Cultural

8. Residential

8. Residential Projects

Villa Maani, Oaks Hill Amman - Jordan

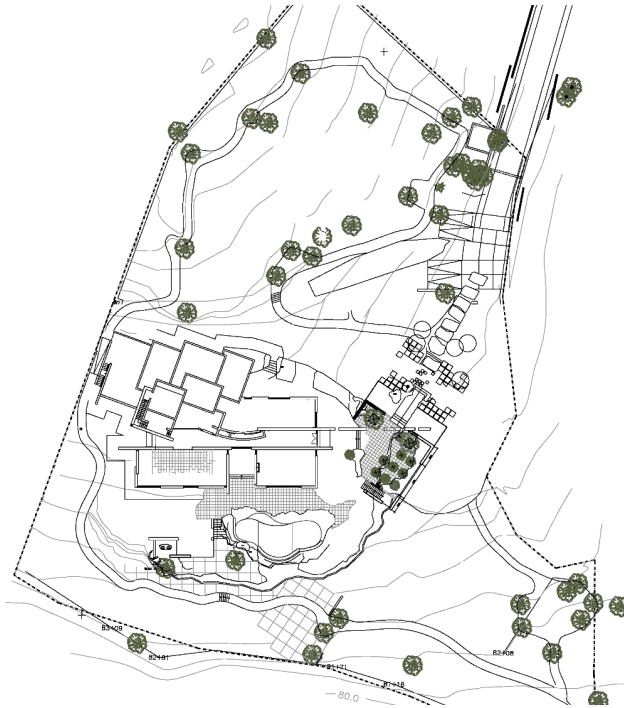
- Five stars, Best Architecture (single unit)
The Arabian Property Awards, 2010
- Agha Khan Award 2004 nomination



Where tran-

quility connects the earth and sky

Nestled on a magnificent hillside in a prestigious location of Amman, with a broad vista directed towards Jerusalem, the architect's residence captures and portrays an ancient story of time. The design draws from the blend of a modern form interpreting the mystical Arabian Culture. The house represents a new form of architecture in Jordan; the design is integrated with the landscape, and is layered horizontally and vertically through a man-made path, which contrasts between solids and voids: the glass and the stone.



Site Plan



General View



Night View, Swimming Pool Area



Night View



Main Entrance View

1. Planning

2. Transport

3. Corporate &
Commercial

4. Hospitality

5. Educational

6. Governmental

7. Cultural

8. Residential



Front View

1. Planning

2. Transport

3. Corporate &
Commercial

4. Hospitality

5. Educational

6. Governmental

7. Cultural

8. Residential



Swimming Pool Area



Main Path, Skylight Area

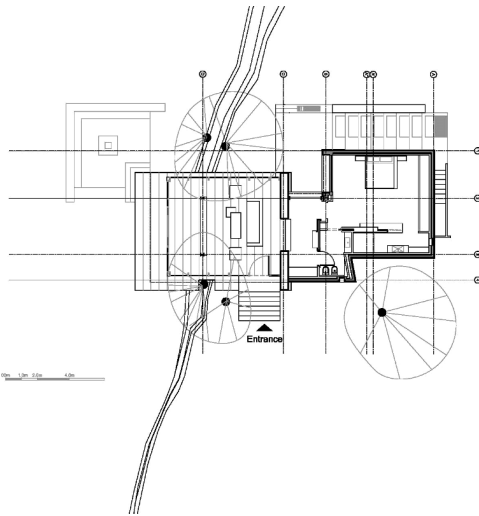
Maani Studio Amman - Jordan

- Five Stars, Best Single Residence, Jordan, Arabian Property Awards 2012.



Space for a Son

The concept of the son's house stems from the desire for a private yet integrated space inspired by the Arabian culture where family structure is of high importance, where high expectations are placed upon the youth to excel and become capable of leading their lives and taking responsibilities towards the well-being of their societies. The architectural approach needs to provide a space that all at once respects the independence of the youthful soul while maintaining a bridge with the family, by adding a new layer to the existing residential design, the architecture explores the ability to form a new detached node to the primary residence, which serves as a one bedroom living space for the son.



Main Plan



General View



Interior



Side View



Entrance View



Back view

1. Planning

2. Transport

3. Corporate &
Commercial

4. Hospitality

5. Educational

6. Governmental

7. Cultural

8. Residential

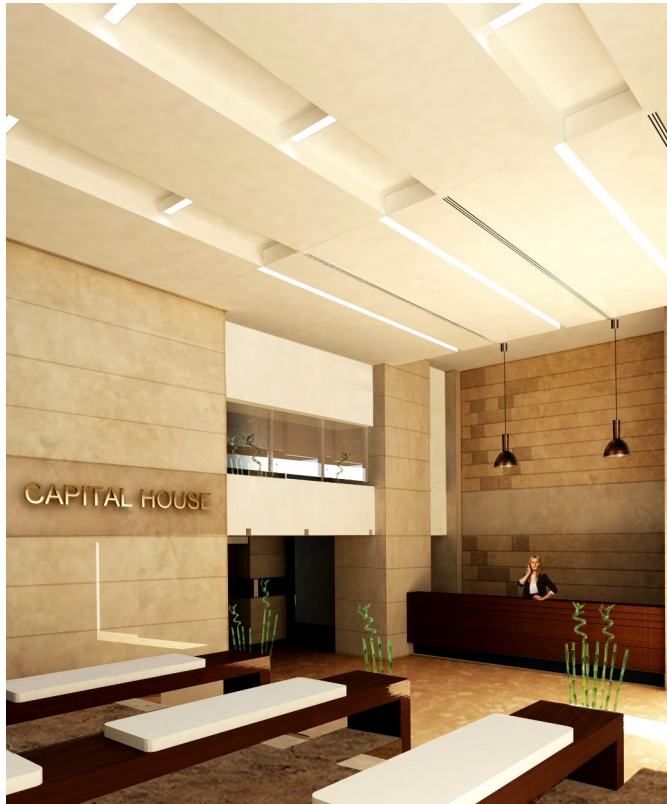
C19 Residential Tower Abu Dhabi - UAE

- Five Stars, Best Architecture Multiple Residence, Abu Dhabi, Arabian Property Awards 2011.
- Best Architecture Multiple Residence, Arabia, Arabian Property Awards 2011.



The concept of the tower is geared towards maximizing the development potential of the plot C19 by optimizing the apartment mix and maximizing the number of bedrooms. In its massing formation and elevation treatment the tower was fragmented into a group of thin planes that differ in treatment, proportion and height, providing a rather dynamic formation with maximum fenestration and show casing the external terraces to achieve a differentiated residential feel to the tower.

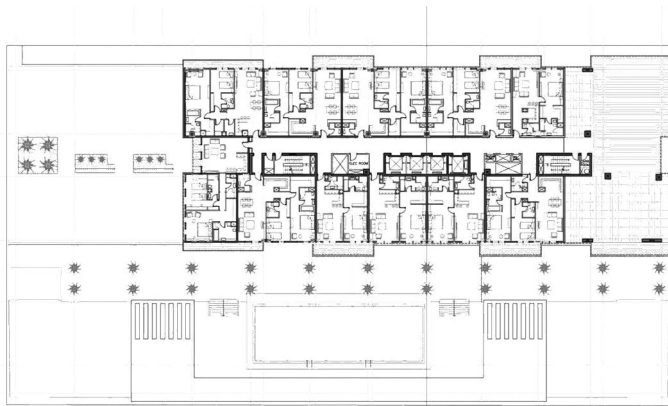
The north east corner of the tower was even more articulated, this provided the project's most exposed corner with added dynamism in respect to the urban setting, as this corner stands at the whole capital center entrance.



Interior View, Lobby



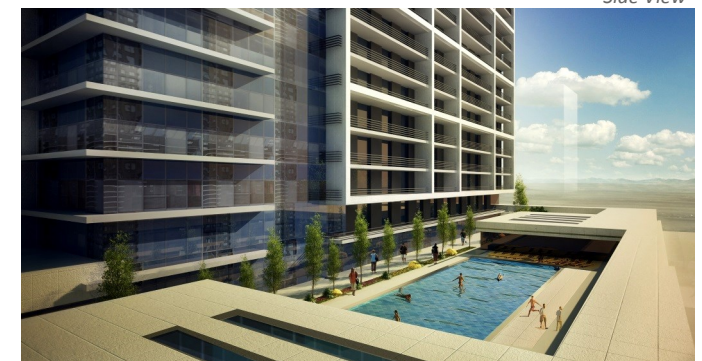
Interior View, Corridor



Typical Floor Plan



Side View



Podium



General View

1. Planning

2. Transport

3. Corporate &
Commercial

4. Hospitality

5. Educational

6. Governmental

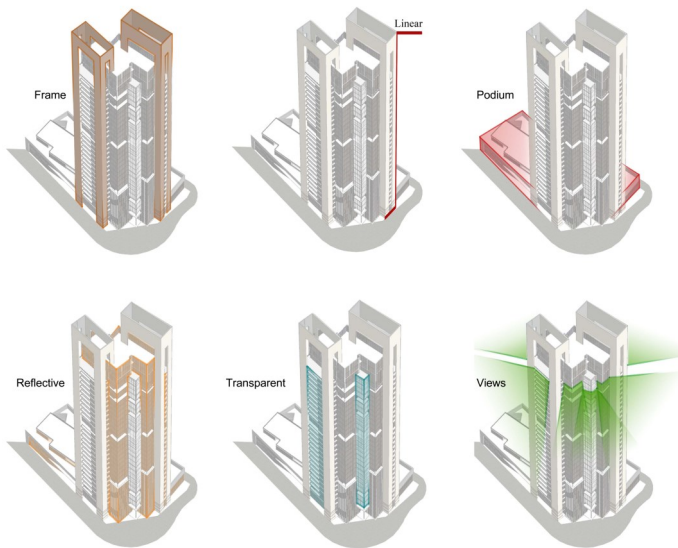
7. Cultural

8. Residential

Reem Tower Abu Dhabi - UAE

Located on a pivotal site in Reem Island which overlooks the best views in all campus directions of Abu Dhabi Island and the sea, the concept of the tower aims to celebrate those views by erecting two main solid frames which envelops lighter glazed “fill” masses with variable studied treatments. The frame-fill combination maximized the views of the one, two and three bedroom apartment combination giving them a distinctive treatment. UAE

The podium was deliberately given the feeling of detachment from the tower to further emphasize on the frame-fill effect and to introduce a positive contrast in the project massing. Three luxurious duplex apartments reside at the crown of the tower overlooking the 360 degrees views.



Conceptual Approach



Reem Tower



Interior Shot

1. Planning

2. Transport

3. Corporate &
Commercial

4. Hospitality

5. Educational

6. Governmental

7. Cultural

8. Residential

East West Tower Abu Dhabi - UAE

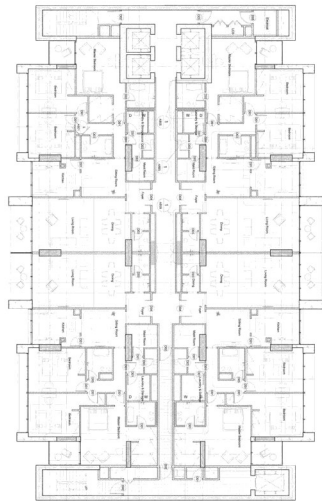
- Best High-Rise Architecture, Abu Dhabi, Arabian Property Awards, 2012.



Floating Towers

This project consists of four vertical residential elements suspended in place by two cores above retail and public spaces all of which are oriented towards North-West to capture the sea view. The high rise building is broken down into a series of dynamic residential towers. The first two floors are allocated for retail spaces, followed by two glazed floors of public amenities. This causes the dominant residential towers to appear to be floating above ground.

The juxtaposed vertical elements vary in height, depth and individual identity yet are unified in architectural language and held in place by flanking solid cores. The broken down residential mass floats above the public realm overlooking the sea and the immense open garden across from the site. The staggered masses also allow for a variety of design combinations within each floor and a high level of privacy.



Typical Floor Plan (Apartments)



General View

Al Huda Plaza Residential Tower
Jeddah - Saudi Arabia

Spearheading commercial development

This development provides a landmark development for the developer's pilot project, accentuating the image of the developer in the market of high-end residential towers. Glass facades provide a relief of transparency, that is lacking in the surrounding residential developments. This design set a pioneering trend among the residential developments in Jeddah.



Site Plan



General View

1. Planning

2. Transport

3. Corporate &
Commercial

4. Hospitality

5. Educational

6. Governmental

7. Cultural

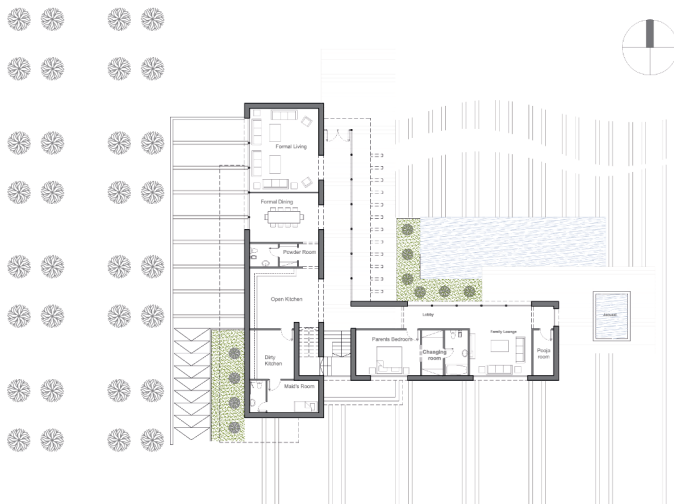
8. Residential

Mansions Gurgaon Gurgaon—India

- Five Stars, Best Architecture Multiple Residence
Jordan, Arabian Property Awards 2012.



The design responds to India's joint family structure as parts or elements that are drawn towards the central point of concentration. It emphasizes cultural characteristics and the strong belief in the 5 elements of life (water, wind, earth, fire and space) and merges the spirit, movement, nature and art in an open yet structured manner according to 'vastu shastra'. The design is translated as Independent elements (parts) which combine additively to form an intermediate whole, where their structure is affected by a central point, urban forces as well as shifts in orientation while their rhythm is maintained in an axial, symmetrical and hierarchical order. This is interpreted in a modern architectural statement. Which states; rigid geometrical formations of masses connecting and overlapping according to function whilst being interpreted by courtyards and open spaces which allow transparency as well as light into the building.



Ground Floor Plan



General View



Front View



Court View



Night View

1. Planning

2. Transport

3. Corporate &
Commercial

4. Hospitality

5. Educational

6. Governmental

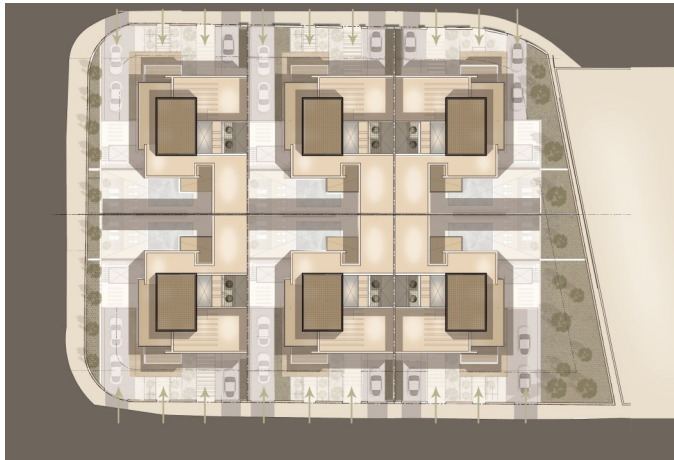
7. Cultural

8. Residential

Kuwait Diplomatic Residence Amman, Jordan

Six Villas for Kuwait Diplomats were to be erected in Amman. The project was especially designed to form a blend between the Kuwaiti and Jordanian cultures in a modern and aesthetic sense.

The Diwaniyeh constitutes an essential space in the building; it grows upwards in a poetic sense creating other livable spaces such as a living room in the first floor, and a sitting area on the roof to celebrate the wonderful views of Amman. The ground floor contains functions such as a reception area for guests, living room, kitchen, and the private guest bedroom. The first floor contains a group of Master Bedrooms dedicated for the relaxation of its users along with a family room which views the Swimming Pool. The basement is fully dedicated for the activities and leisure of the family which opens up to the pool, with a large living space to accommodate the needs of everyone. In addition to that, it houses the building services and the main kitchen, all secluded in private place in the basement. The villas are all replicas of each other situated in conventional ways in order to give each villa its own privacy and the best views.



Site Plan



Exterior View



Interior View



Kuwait Diplomatic Residences, night view

1. Planning

2. Transport

3. Corporate &
Commercial

4. Hospitality

5. Educational

6. Governmental

7. Cultural

8. Residential

Matrix Apartment Building (Crystalle) Amman - Jordan

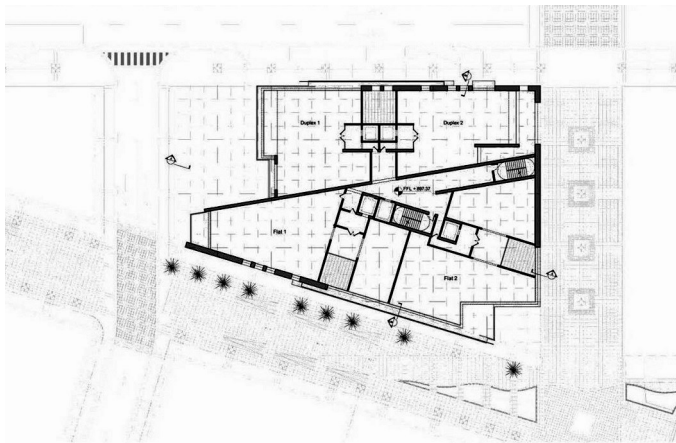
- Five Stars, Best Apartment Building, Arabian Property Awards 2010.
- Five Stars, Architecture Award, Mixed Use Project, Arabian Property Awards 2010.



Crystalle is an innovative villa complex on the main prominent road of the Abdali District and across the street from Abdali Boulevard, the major pedestrian shopping and entertainment core of the new downtown. It is a unique mix of spacious duplexes and simplexes all of which have private elevator landings and as well as dedicated service entrances usually only found in villas. The design has accomplished ultimate in luxury, a place where the residents truly feel like they are living in villas that are floating within a building. From the early stages of design this building was developed to be a sustainable green building and currently is seeking LEED's Gold certification for shell and core.



General View



First Floor Plan



Interiors



Night View

1. Planning

2. Transport

3. Corporate &
Commercial

4. Hospitality

5. Educational

6. Governmental

7. Cultural

8. Residential

Private Residential Towers
Abu Dhabi—UAE

The Elevated Earth

Driven by the purpose of creating the optimum living environment and experience for the people residing at this complex, we envisioned the project beyond planning arrangement of separate plots, we perceived these five buildings as one living body where people interact within. The concept was to elevate the earth creating one single above-ground neighborhood that embraces the living component.

Little parks, shops and children activities became achievable to serve the families needs. Then, this content above-ground neighborhood will allow for a consistent retail experience at ground level and maximize the development potential of the site and client's return.



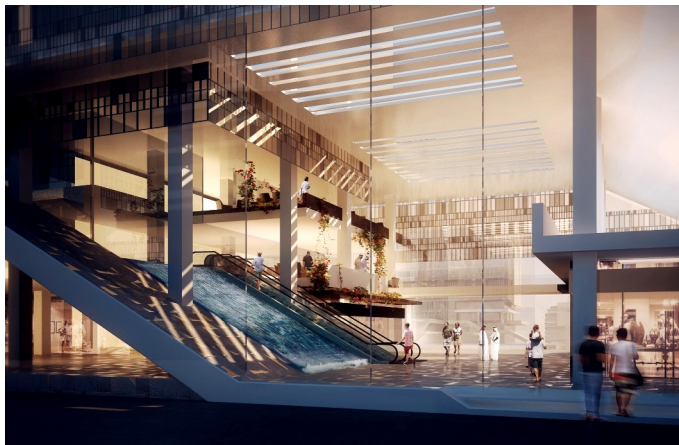
General View



Apartments Floor Plan



General View



Front View



Front View

1. Planning

2. Transport

3. Corporate &
Commercial

4. Hospitality

5. Educational

6. Governmental

7. Cultural

8. Residential

Villa Zabaneh Amman, Jordan

- Five Stars, Best Architecture Single Residence Jordan, Arabian Property Awards 2011.
- Best Architecture Single Residence Arabia, Arabian Property Awards 2011.

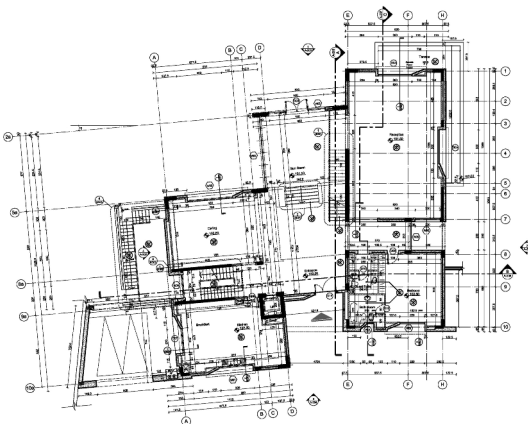


Located within one of Amman's most prominent residential districts, Mrs. Hania & Ramzi Zabaneh house provides the family with a perfect home experience close to the rest of the Zabaneh family that inhabits the area.

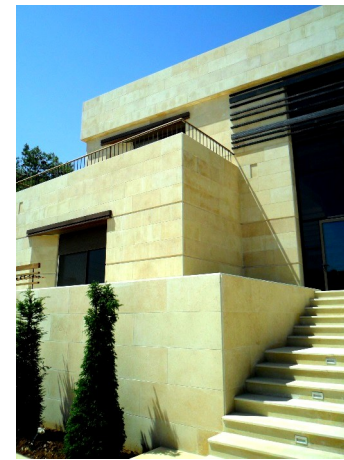
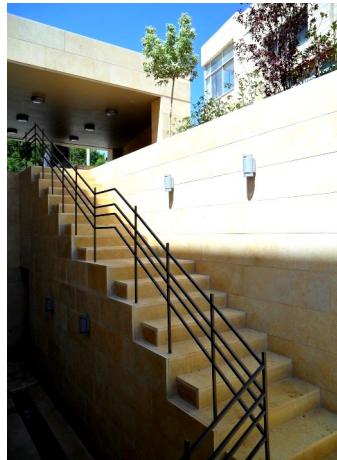
From day one, the value of creating a gallery house was imprinted in the concept of such cotemporary yet local house. Its exterior massing state a dialogue between its edges and facades, while its interiors marvel with sculptural elements and natural lighting.



Main Entrance View



Ground Floor Plan



Villa Details

1. Planning

2. Transport

3. Corporate &
Commercial

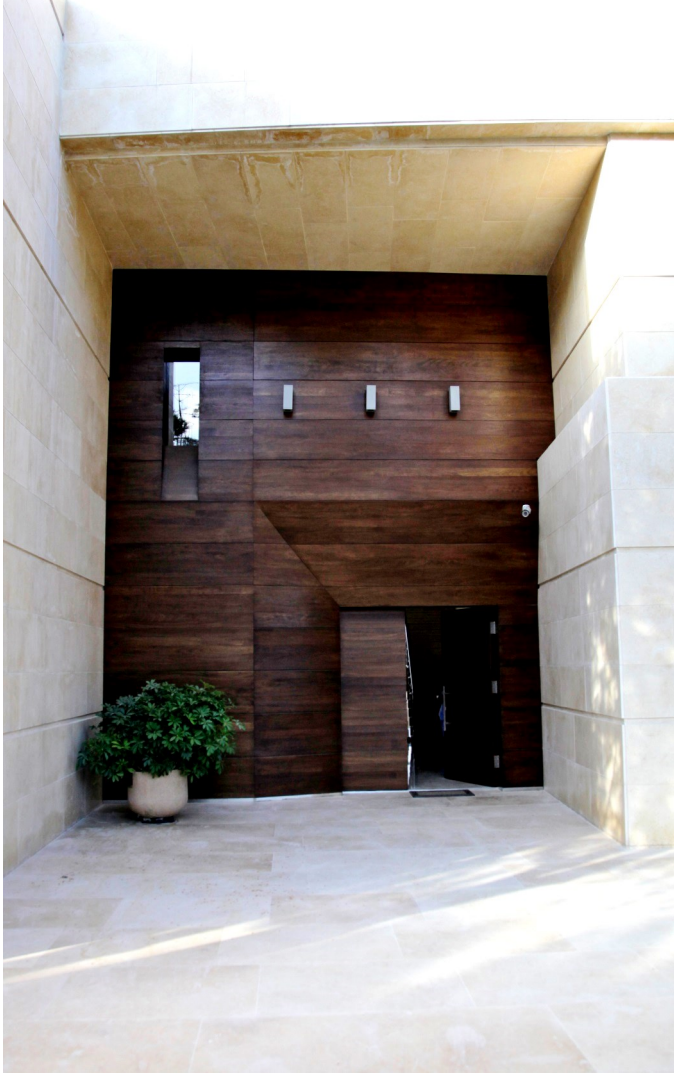
4. Hospitality

5. Educational

6. Governmental

7. Cultural

8. Residential



Main Entrance View



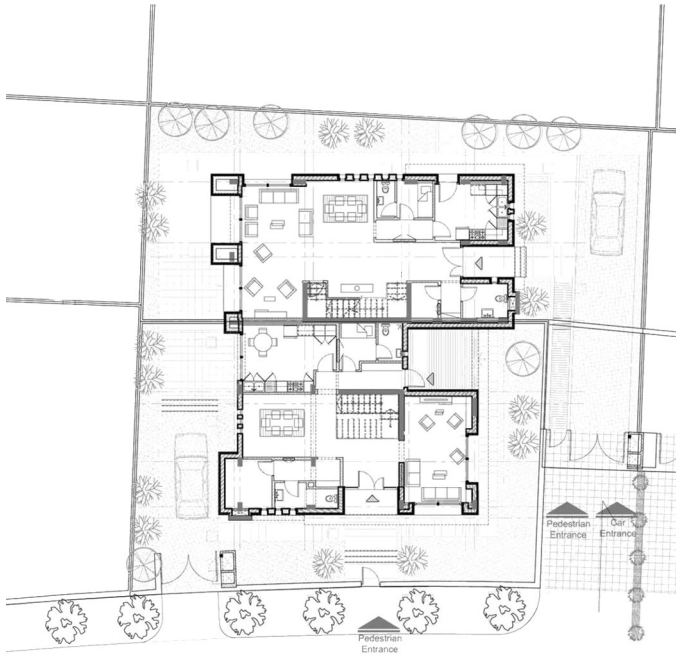
Interior

Maabar Villas Aqaba - Jordan

- Five Stars, Best Mixed Used Architecture Jordan, Arabian Property Awards 2012.



Marsa Zayed is the largest real estate and development project in the history of Jordan. It is a mixed use development including residential, commercial, recreational and entertainment facilities covering 3.2 million sqm and having a total cost of \$10billion .Marsa Zayed will offer more than 30,000 residences ranging from apartments to elegant townhouses and luxurious villas. This project will consist of 151 townhouses and 263 village flats that will be serviced by a neighborhood retail and community centre and Sheikh Zayed's Grand Masjid which will accommodate around 2,000 worshippers.



Ground Floor Plan



Villa Type A, General View



Interior

1. Planning



2. Transport



3. Corporate &
Commercial



Villas

4. Hospitality

5. Educational

6. Governmental

7. Cultural

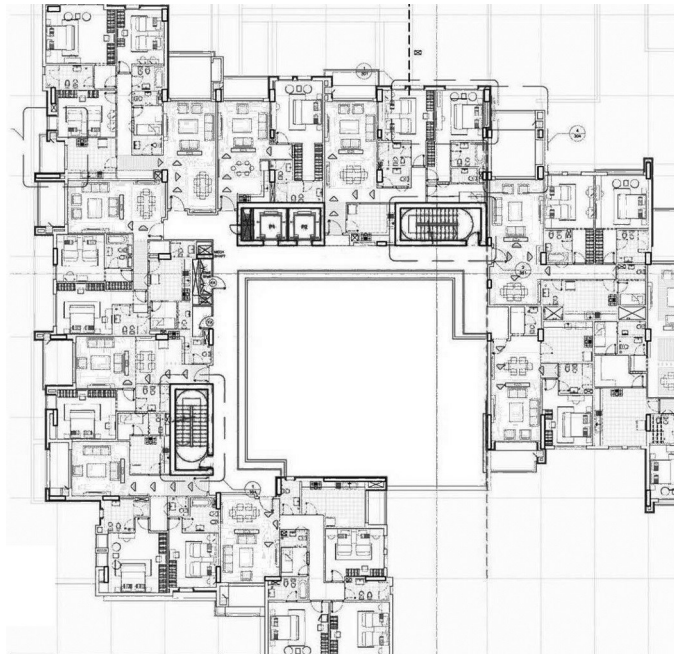
8. Residential

Maabar Apartments Aqaba - Jordan

- Five Stars, Best Mixed Used Architecture Jordan, Arabian Property Awards 2012.



Marsa Zayed is the largest real estate and development project in the history of Jordan. It is a mixed use development including residential, commercial, recreational and entertainment facilities covering 3.2 million sqm and having a total cost of \$10billion .Marsa Zayed will offer more than 30,000 residences ranging from apartments to elegant townhouses and luxurious villas. This project will consist of 151 townhouses and 263 village flats that will be serviced by a neighborhood retail and community centre and Sheikh Zayed's Grand Masjid which will accommodate around 2,000 worshippers.



Apartment General Layout, Ground Floor Plan



General View



Apartments, Night View

1. Planning

2. Transport

3. Corporate &
Commercial

4. Hospitality

5. Educational

6. Governmental

7. Cultural

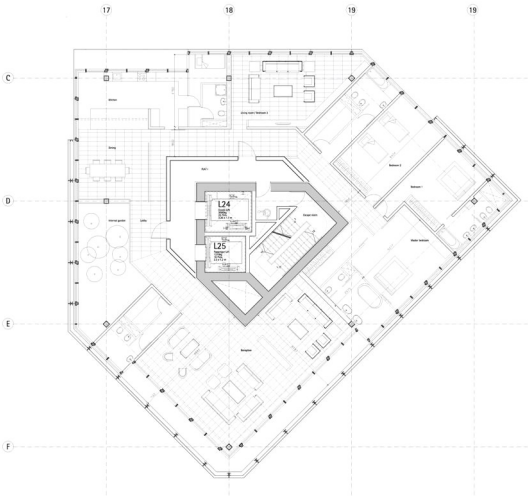
8. Residential

Living Wall Amman, Jordan

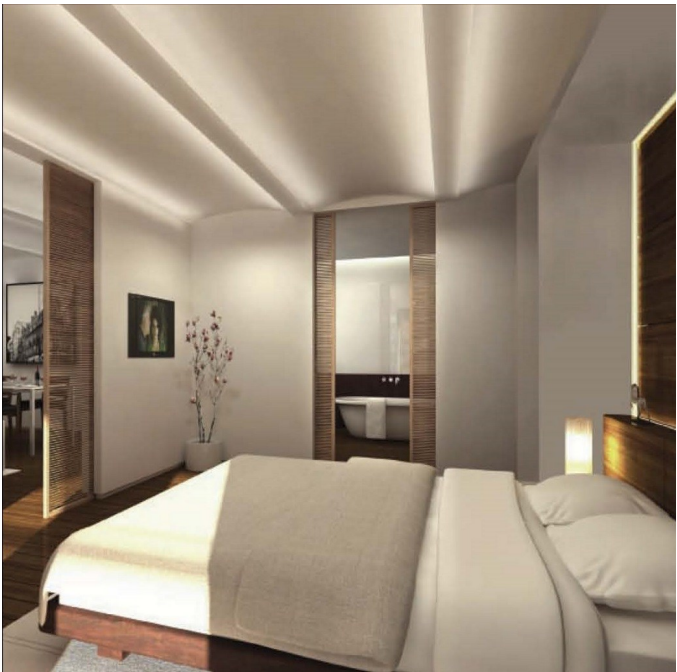
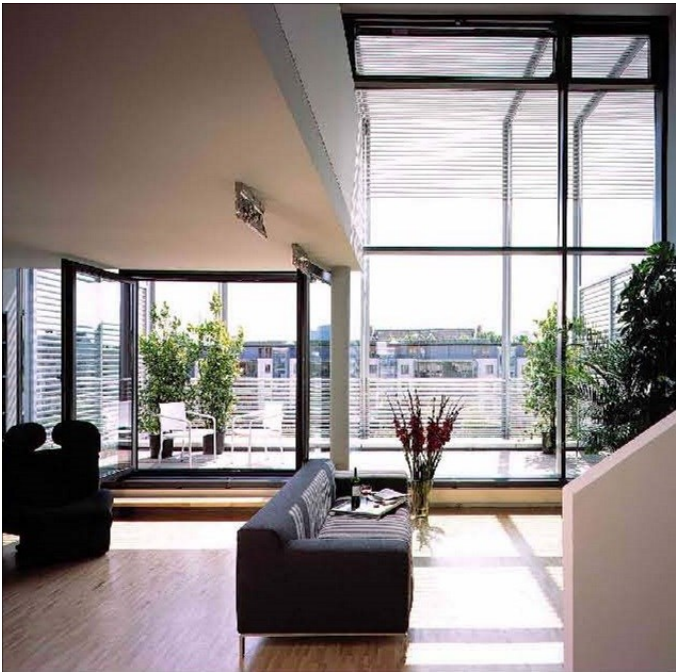
- Award For Best Future Commercial Project, Cityscape Dubai 2006.
- Award For Top Architecture, CNBC Architecture Property Awards.

The residential block is the fourth block on the podium. The design of the apartments is simple, with the aim to keep partition walls to a minimum, ensure flexibility of use and allow for one’s own spatial intervention. Kitchen, reception and dining room are conceived as one big open space, with access to a long, wide balcony offering views over the city.

The bedrooms, being part of the private realm of the house, occupy a designated area and are accessible through a wide corridor where cupboards, library, book shelves, can be built into the wall.



Residential Tower Plan



Apartments’ Interiors



Amenities Serving The Residential Component

1. Planning

2. Transport

3. Corporate &
Commercial

4. Hospitality

5. Educational

6. Governmental

7. Cultural

8. Residential



Lobby



Roof View



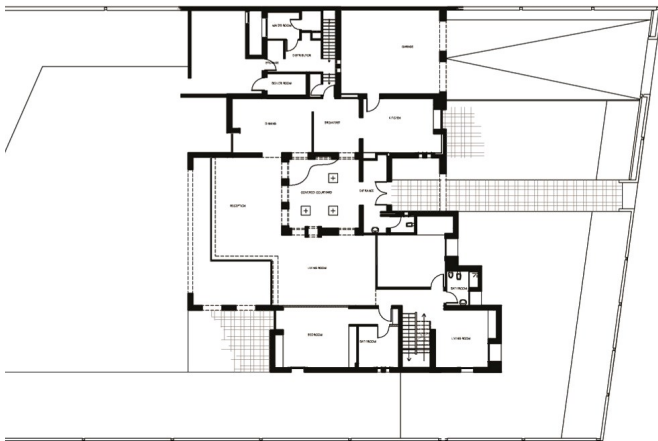
Living Wall, General View

Batayneh Residence

Amman, Jordan

Located in Dabouq along Mohammad al-Batayni St., the house occupies an area within a cultural district; containing king Hussein's park, children's museum and a range of schools within a residential urban fabric. A large green terrain lies on the southern side of the residence giving the impression of a country-like life. This location is considered an important zone with high criteria where people of high ranks take residence in.

One of the key aspects of Jordanian culture is the hospitality shown by hosts to their guests. Keeping this notion in mind along with the client's requests of a welcoming yet private space, the design approach responds to these requirements through its architecture. The use of horizontal and vertical layers that form the villa, its orientation on site, the distribution of its spaces, and the user's movement from public to semi public to private.



Ground Floor Plan



Interior View



Villa Massing



Back View



Entrance View

Casa La Luna, Santa Fe New Mexico, USA

Bridging contemporary with tradition

Unification is a recurring theme in the language of the architecture, the use of the local material unifying shelter and the site, the link between the old and the new house. The effort to save the old materials while thoroughly updating and renewing the systems and infrastructure of the house.

Other ties of unity are cultural and symbolic, such as the masterful use of masses and voids in the new house has unified the entire structure with a flow and a unity of language despite a completely complimentary use of materials.



The Existing Old House



1. Planning

2. Transport

3. Corporate &
Commercial

4. Hospitality

5. Educational

6. Governmental

7. Cultural

8. Residential

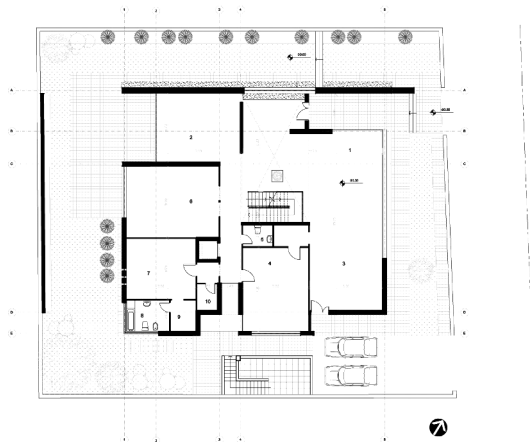
Mahrakani Residence

Amman, Jordan

A modern architectural statement utilizing Jordanian traditional stone. The 800m² house stands out gracefully amidst its suburban peaceful surrounding. The houses experiments a group of architectural expressions, solidity versus transparency, smoothness versus roughness, introverted versus extroverted and most importantly modern versus traditional.



Front view



Ground Floor Plan



Skylight Zone



Entrance View. Indoor

1. Planning

2. Transport

3. Corporate &
Commercial

4. Hospitality

5. Educational

6. Governmental

7. Cultural

8. Residential



Night View

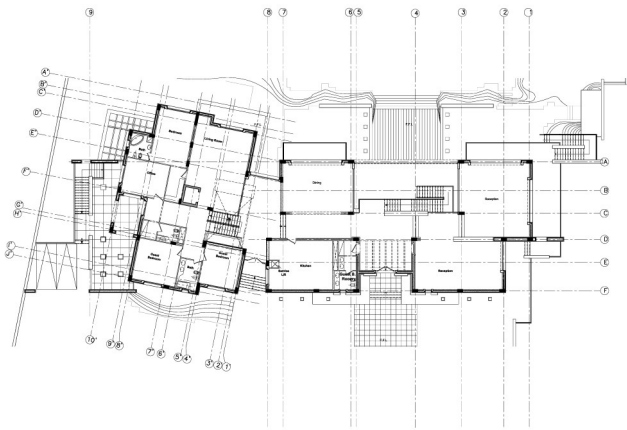
Akkabi Residence

Amman, Jordan

The site is nestled on a hill that overlooks the majestic view of the Abdoun Valley stretching below and the modern suspended Abdoun bridge in the distance. To capture this view completely, the façade incorporates large windows that overlook the negative edge of the pool, which further leads the eye to magnificent vista ahead. The house at the street level displays a deceptive alliance with the human scale, appearing only one story high, but the gently sloping site incorporates more floors below and yet maintains the elegance of the scale of the front façade.



View From Abdoun Valley



Plan



View From Abdoun Valley



Villa Massing



Akkabi Residence

1. Planning

2. Transport

3. Corporate &
Commercial

4. Hospitality

5. Educational

6. Governmental

7. Cultural

8. Residential

VIP Village

Dead Sea - Jordan

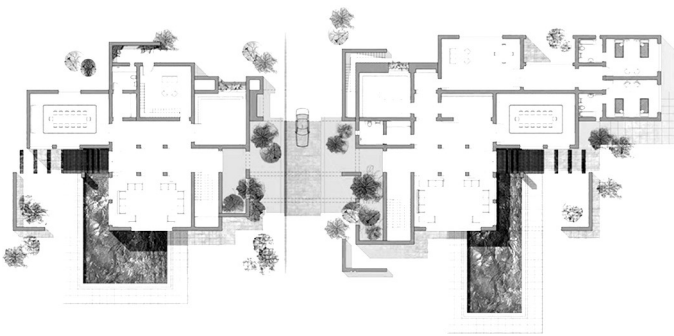
The layout and design approach was strained by factors influencing continuous change in the natural make-up of the land upon which Guest Houses where to be laid and their functions. The program includes :Nineteen single and semi-attached houses, located on two interconnected locations on shore, taking into consideration the future increase in Sea level by the Red Dead. Along the Rift: lies the Business Center, Restaurants, Spa and an adjacent hotel; all connected in a manner that makes the functioning of each facility independent of the other.



VIP Village, Villa



VIP Village, Villa



VIP Village, Villa Plans



VIP Village, Villa

1. Planning

2. Transport

3. Corporate &
Commercial

4. Hospitality

5. Educational

6. Governmental

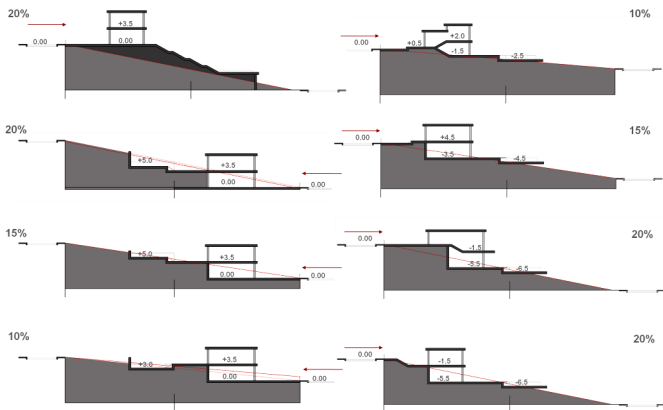
7. Cultural

8. Residential

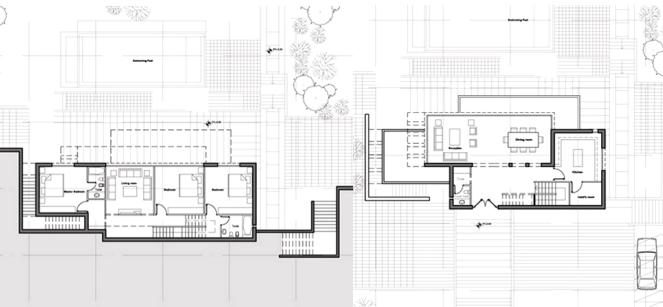
Um Qais Resort Development

Um Qais - Jordan

The Umm Qais Resort is planned with the vision to provide quality hospitality, Leisure and resort destinations within a planned community of rural second homes, all of which within the magnificent foot hills of Umm-Qais, an area rich with history and natural beauty. This development will not only be a Resort at a destination; but also will be a destination resort which would include quality attractions, offering food, drink, lodging, sports, entertainment and shopping . This 55 hectare development will attract dwellers and users from Irbid: Jordan's Capital of the North, Amman and will attract tourists from around the globe.



Site Driven Planning of the Residential Neighborhoods



Um Qais Development , Villa Plans



Um Qais Development, Master Plan



Um Qais Development, Villa



Um Qais Development, Villa



Um Qais Development, Villa

1. Planning

2. Transport

3. Corporate &
Commercial

4. Hospitality

5. Educational

6. Governmental

7. Cultural

8. Residential

Sienna Hills

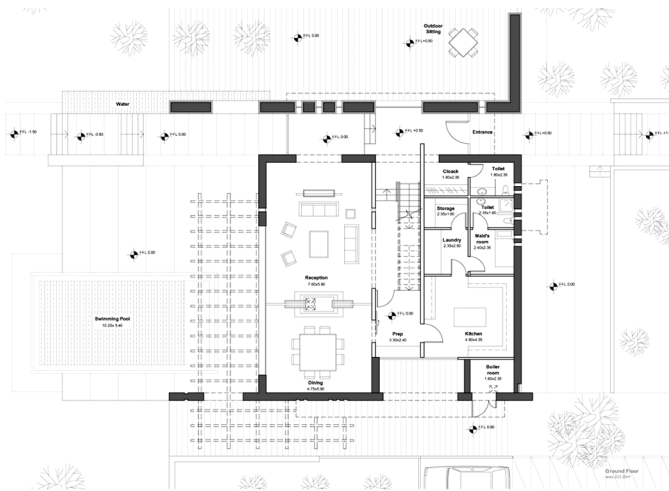
Ktefeh - Jordan

A Fantasy Engraved in Nature

Timelessly attractive, adaptive and sustainable, ‘Sienna Hills’ is an innovative and pioneering concept in residential community living; thoughtfully planned down to the smallest detail. ‘Sienna Hills’ offers its residents the possibility to live in a dream-like village that exclusively and creatively combines nature with luxurious architecture.

‘Sienna Hills’ embodies the equilibrium between the serenity of nature and the energy of equine and outdoor activity, offering its residents homes designed with an earthly spirit surrounded by expression of style and striking outdoor beauty.

The 2,498,200 square meter master plan functions independently as a community that incorporates service centers, entertainment centers such as an Equestrian club, a Hotel, Green Areas and public parks, in addition to luxurious residential villas and town houses varying in area and land spread .



Sienna Hills , Villa Plan



Sienna Hills, Villa



Sienna Hills, Villa



Sienna Hills, Villa



Sienna Hills, Villa



Interior View, Bedroom



Interior View, Living Room



Seinna Hills, Villa

1. Planning

2. Transport

3. Corporate &
Commercial

4. Hospitality

5. Educational

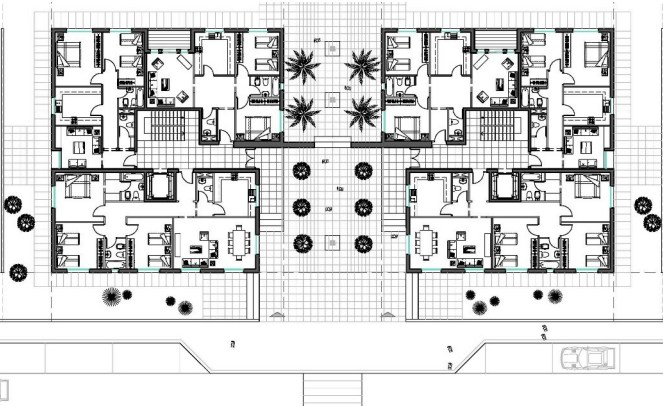
6. Governmental

7. Cultural

8. Residential

Mirage Residential Development
Amman - Jordan

The Mirage Residential Development is envisaged as a high quality planned suburban development, that embodies a fine lifestyle and capitalizes on the natural environment. The development consists of residential apartment buildings, landscaped open spaces, high quality infrastructure and other amenities within an enhanced suburban setting. The architectural image draws inspiration from the context of the site, with its green surroundings and capturing at every angle its multiple picturesque views. The Mirage Residential Development is a green oasis that reinvents the suburban experience with an enhanced community lifestyle.



Ground Floor Plan



Apartments



Elevation Showing The Boulevard Concept



Apartments

1. Planning

2. Transport

3. Corporate &
Commercial

4. Hospitality

5. Educational

6. Governmental

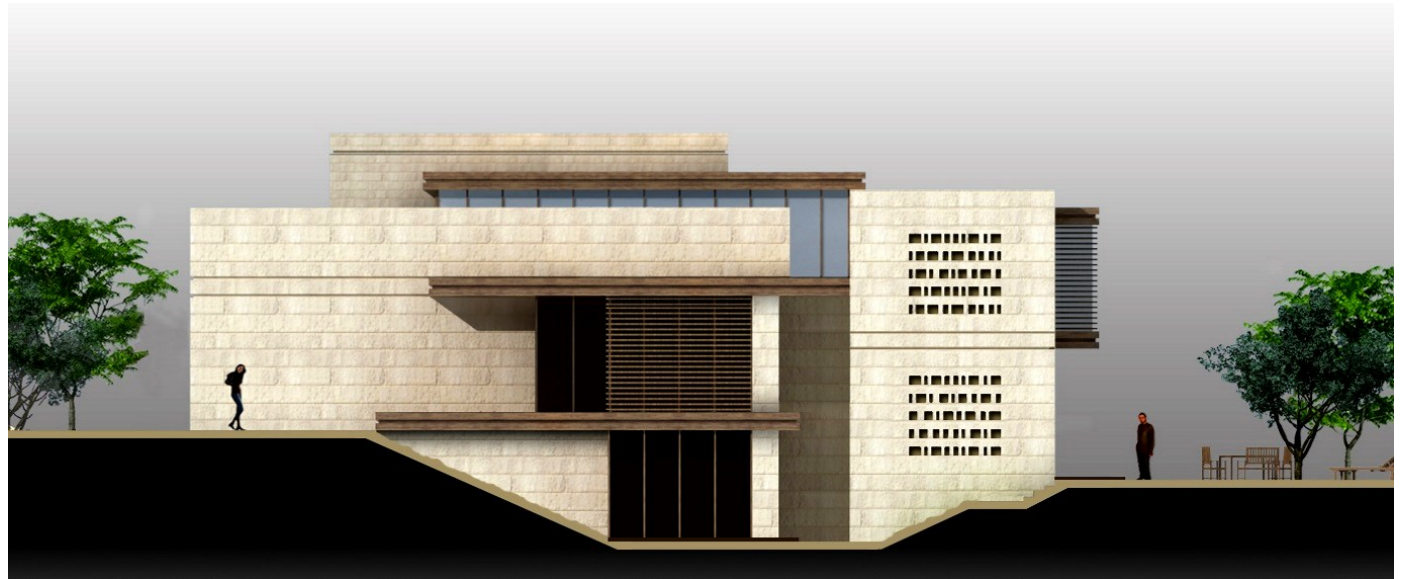
7. Cultural

8. Residential

Villa Alma

Fuheis, Jordan

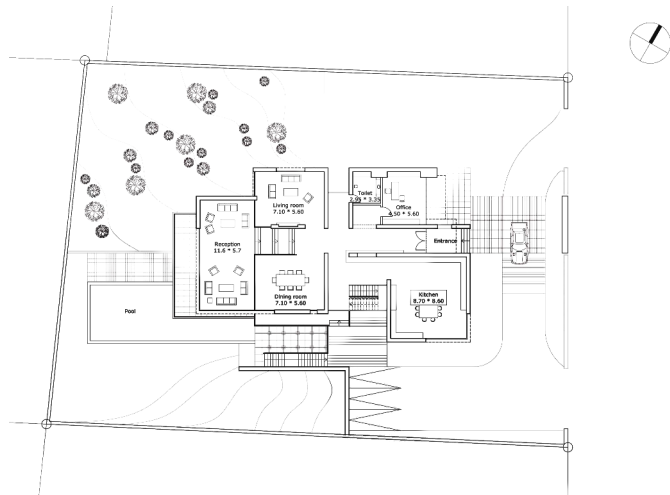
Villa Alma is built on a magnificent site located at the quality and serene neighborhoods of Fuheis which covers an area of approximately 2'056m². A modern simple high end house that responds to the site and its surrounding views. The house is envisaged to be environmentally friendly through utilizing the land development potential while keeping the gross area at a minimum, implementing energy saving concepts and systems, and responding to the site's natural context and a local (eastern) architectural setting. In addition to the house itself the project entails the development of a master plan that includes gardens, hard landscaped areas, swimming pool, and roadways and pathways, taking into consideration future expansion.



Elevation



Elevation



Ground Floor Plan



Entrance View

1. Planning

2. Transport

3. Corporate &
Commercial

4. Hospitality

5. Educational

6. Governmental

7. Cultural

8. Residential

Villa Alayyan

Amman, Jordan

Located at the natural suburbs of New Bader area, at an overlooking plot of 5573.270 square meters sits the Alayyan Family Residence. The site offers reasonable proximity to inner Amman, whilst offering a serene context as opposed to the fast busy nature of Amman.

The design of the Villa blends with the environment and natural context beautifully, which offers quality spaces that enjoy the openness of the surrounding views towards the hilly and mountainous topographic nature.

With a total area of approximately 1800 square meters, the house offers traditional courtyards responding to existing trees located randomly on the land plot, enhancing daylight and refreshing breeze penetration into the high quality nature of interior spaces. Such introverted experience is balanced through an extroverted sense that is creatively created through the hierarchical massing that blends with the hilly context and marvelous nature.



Back View



Entrance View



Courtyard View



Night View

1. Planning

2. Transport

3. Corporate &
Commercial

4. Hospitality

5. Educational

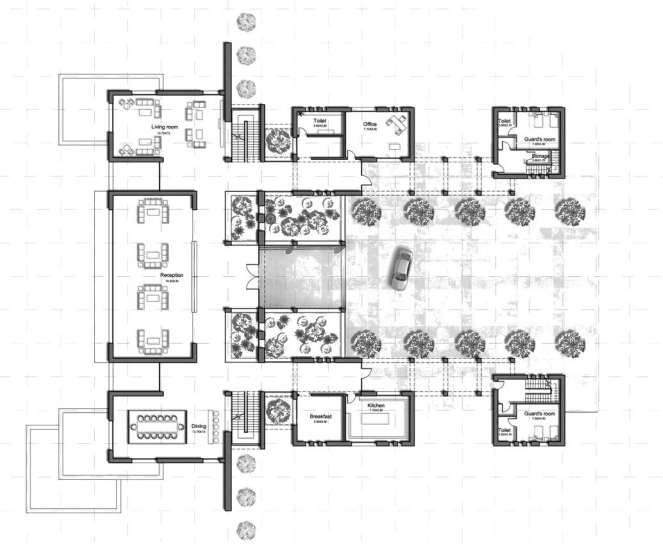
6. Governmental

7. Cultural

8. Residential

Salfiti Villa
Amman - Jordan

On a magnificent hill located at the quality and serene suburbs of Um Al-Kundom, Al-Salfiti family intends to build their residence on a proposed site covers two plots with a total area of 21'000 m² .The scheme addresses a master plan for both plots that includes a 2'000 m² main house, landscaped gardens and swimming pool, access road, in addition to possible future expansion of a group of residences. The house blends with the environmental and natural context of the site, offer quality spaces that enjoy the openness of the surrounding views, and provide state of the art services and amenities.



Ground Floor Plan



General View



General Section



General View

1. Planning

2. Transport

3. Corporate &
Commercial

4. Hospitality

5. Educational

6. Governmental

7. Cultural

8. Residential

Shaban Apartment Building
Amman - Jordan



General View



Ground Floor Plan



Back View



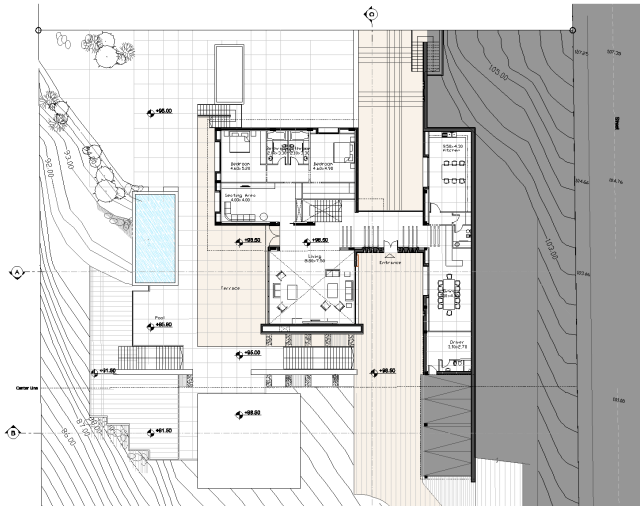
Entrance

Mina Villa
Amman - Jordan

Mina family intends to build their residence on a magnificent piece of land located at the quality and serene suburbs of New Na'ur.

The proposed site covers one plot with a total area of 4015 m².The intended house will blend with the environmental and natural context of the site, offers quality spaces that enjoy the openness of the surrounding views.

The journey to the site includes an interesting visual carnival of magnificent views offered by the hilly and mountainous topographic nature of the area and the wild existing landscape.



Main Floor Plan



General View

1. Planning

2. Transport

3. Corporate &
Commercial

4. Hospitality

5. Educational

6. Governmental

7. Cultural

8. Residential